

## Test Report

Page 1 of 7

**Company Name** ELECTRIDUCT INC  
**shown on Report**  
**Address** 1650 NW 18TH STREET, UNIT 801, POMPANO BEACH FLORIDA, 33069, UNITED STATES OF AMERICA

**The following sample(s) and sample information was/were submitted and identified by/on the behalf of the applicant**

**Sample Name** PE winding pipe  
**Color** Black, White, transparent  
**Material** polyethylene  
**Sample Received Date** Jul. 6, 2023  
**Testing Period** Jul. 6, 2023 to Jul. 11, 2023

**Test Requested** As specified by client, to test Lead (Pb), Cadmium (Cd), Mercury (Hg), Hexavalent Chromium (Cr(VI)), Polybrominated Biphenyls (PBBs), Polybrominated Diphenyl Ethers (PBDEs), Phthalates (DBP, BBP, DEHP, DIBP) in the submitted sample(s).

**Test Method** Please refer to the following page(s).

**Test Result(s)** Please refer to the following page(s).

Date

Jul. 11, 2023

# Test Report

**Test Method**

Page 2 of 7

Test Item(s)	Test Method	Measured Equipment(s)
Lead (Pb)	IEC 62321-5:2013	ICP-OES
Cadmium (Cd)	IEC 62321-5:2013	ICP-OES
Mercury (Hg)	IEC 62321-4:2013+AMD1:2017 CSV	ICP-OES
Hexavalent Chromium (Cr(VI))	IEC 62321-7-2:2017 and/or determination of Total Chromium by IEC 62321-5:2013	UV-Vis/ICP-OES
Polybrominated Biphenyls (PBBs)	IEC 62321-6:2015	GC-MS
Polybrominated Diphenyl Ethers (PBDEs)	IEC 62321-6:2015	GC-MS
Phthalates (DBP, BBP, DEHP, DIBP)	IEC 62321-8:2017	GC-MS

# Test Report

Test Result(s)

Page 3 of 7

Tested Item(s)	Result	MDL
	001	
Lead (Pb)	N.D.	2 mg/kg
Cadmium (Cd)	N.D.	2 mg/kg
Mercury (Hg)	N.D.	2 mg/kg
Hexavalent Chromium (Cr(VI))	N.D.	8 mg/kg
Tested Item(s)	Result	MDL
	001	
Polybrominated Biphenyls (PBBs)		
Monobromobiphenyl	N.D.	5 mg/kg
Dibromobiphenyl	N.D.	5 mg/kg
Tribromobiphenyl	N.D.	5 mg/kg
Tetrabromobiphenyl	N.D.	5 mg/kg
Pentabromobiphenyl	N.D.	5 mg/kg
Hexabromobiphenyl	N.D.	5 mg/kg
Heptabromobiphenyl	N.D.	5 mg/kg
Octabromobiphenyl	N.D.	5 mg/kg
Nonabromobiphenyl	N.D.	5 mg/kg
Decabromobiphenyl	N.D.	5 mg/kg
Tested Item(s)	Result	MDL
	001	
Polybrominated Diphenyl Ethers (PBDEs)		
Monobromodiphenyl ether	N.D.	5 mg/kg
Dibromodiphenyl ether	N.D.	5 mg/kg
Tribromodiphenyl ether	N.D.	5 mg/kg
Tetrabromodiphenyl ether	N.D.	5 mg/kg
Pentabromodiphenyl ether	N.D.	5 mg/kg
Hexabromodiphenyl ether	N.D.	5 mg/kg
Heptabromodiphenyl ether	N.D.	5 mg/kg
Octabromodiphenyl ether	N.D.	5 mg/kg
Nonabromodiphenyl ether	N.D.	5 mg/kg
Decabromodiphenyl ether	N.D.	5 mg/kg

# Test Report

Test Result(s)

Page 4 of 7

Tested Item(s)	Result	MDL
	001	
Phthalates (DBP, BBP, DEHP, DIBP)		
Dibutyl phthalate (DBP) CAS#:84-74-2	N.D.	50 mg/kg
Butyl benzyl phthalate (BBP) CAS#:85-68-7	N.D.	50 mg/kg
Di-(2-ethylhexyl) phthalate (DEHP) CAS#:117-81-7	N.D.	50 mg/kg
Diisobutyl phthalate (DIBP) CAS#:84-69-5	N.D.	50 mg/kg

## Sample/Part Description

No.	CTI Sample ID	Description
1	001	Mixed test, black, white and transparent plastic

**Remark:**

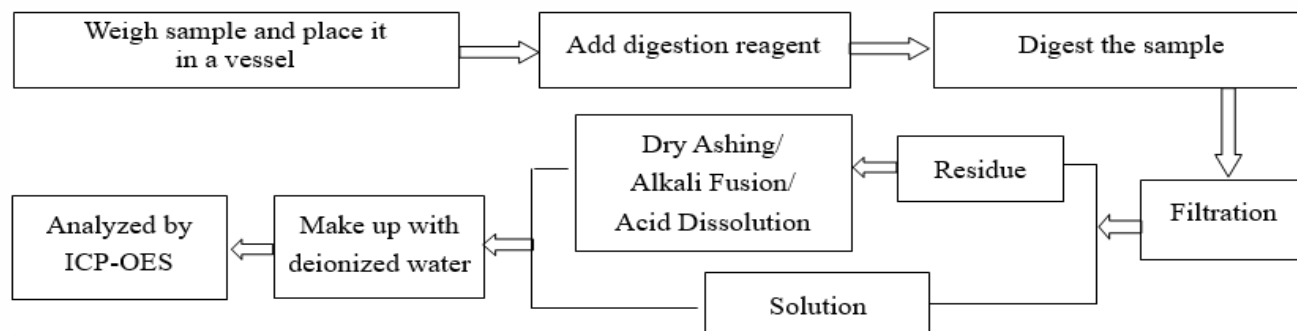
- The sample(s) had been dissolved totally tested for Lead, Cadmium, Mercury.
- As specified by client, the test was conducted by mixing several samples together. The result(s) shown on this report may be different from the content of any homogeneous material.
- MDL = Method Detection Limit
- N.D. = Not Detected (<MDL )
- mg/kg = ppm = parts per million

# Test Report

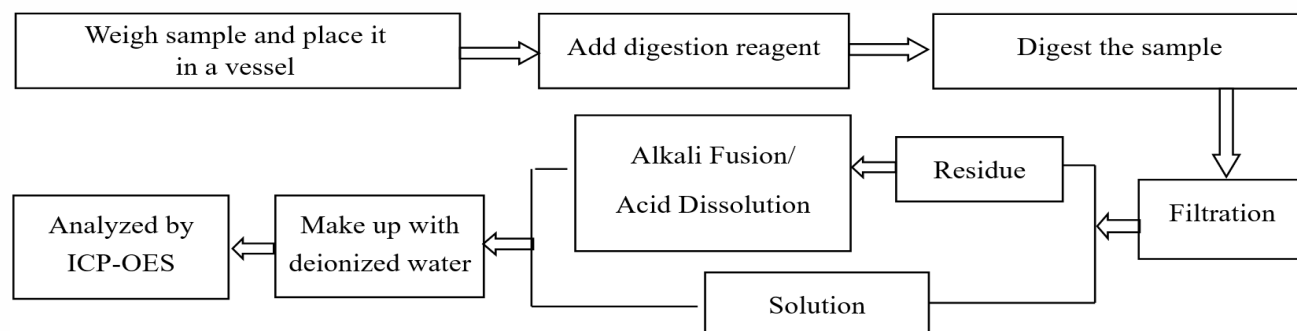
Page 5 of 7

## Test Process

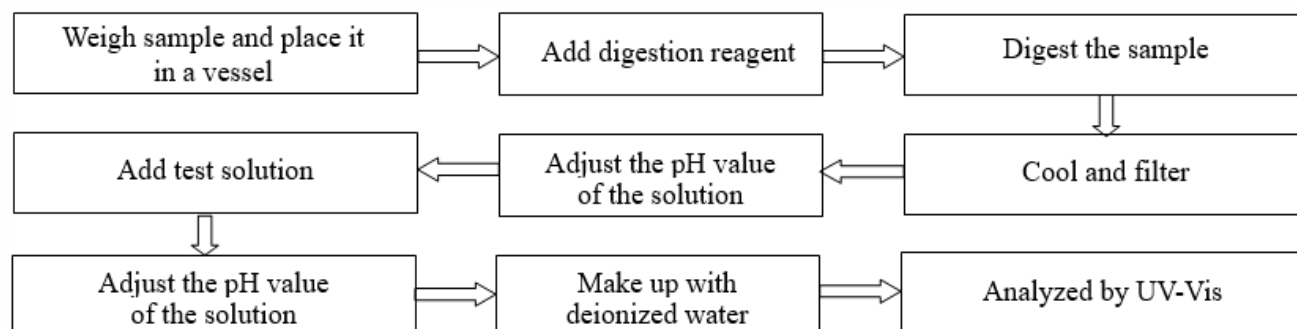
### 1. Lead (Pb), Cadmium (Cd), Chromium (Cr)



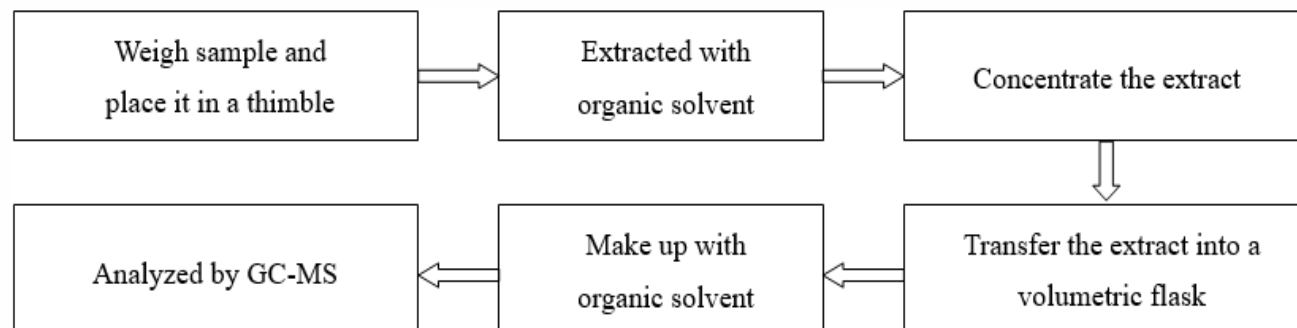
### 2. Mercury (Hg)



### 3. Hexavalent Chromium (Cr(VI))



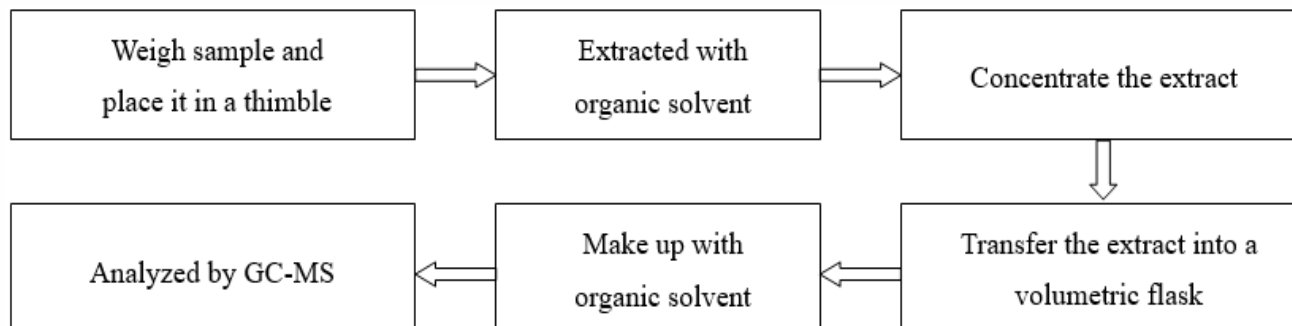
### 4. Polybrominated Biphenyls (PBBs), Polybrominated Diphenyl Ethers (PBDEs)



## Test Report

Page 6 of 7

### 5. Phthalates (DBP, BBP, DEHP, DIBP)



## Test Report

Page 7 of 7

Photo(s) of the sample(s)



\*\*\* End of report \*\*\*